

# Milk Production

Released April 17, 2009, by the National Agricultural Statistics Service (NASS), Agricultural Statistics Board, U.S. Department of Agriculture. For information on *Milk Production* call Mike Miller at 202-720-3278, office hours 7:30 a.m. to 4:00 p.m. ET.

## March Milk Production down 0.2 Percent

**Milk production** in the 23 major States during March totaled 15.2 billion pounds, down 0.2 percent from March 2008. February revised production at 13.6 billion pounds, was down 2.7 percent from February 2008. The February revision represented a decrease of 23 million pounds or 0.2 percent from last month's preliminary production estimate.

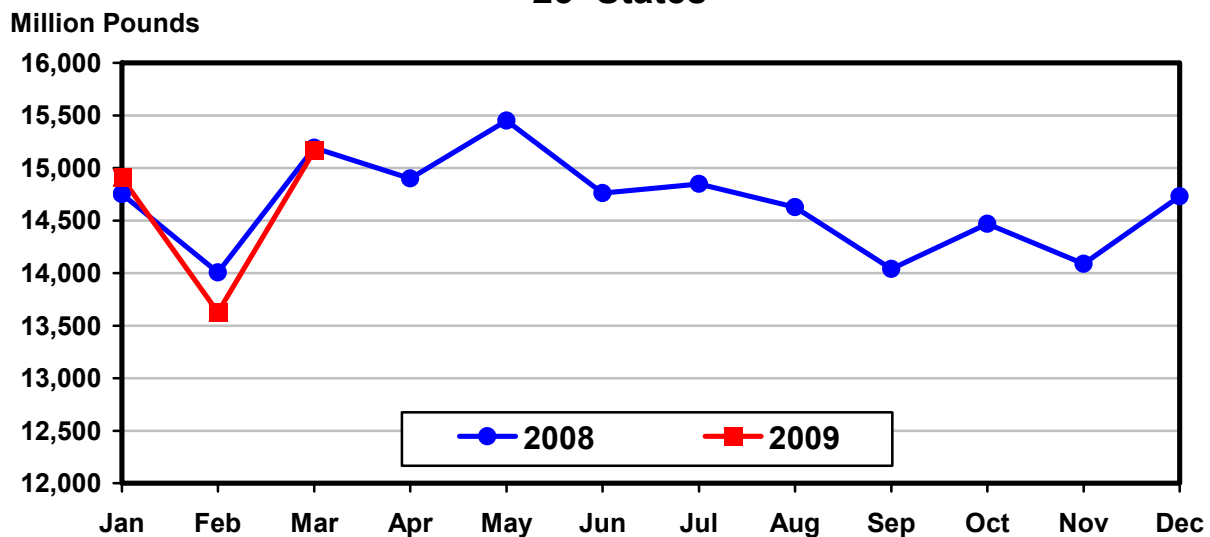
**Production per cow** in the 23 major States averaged 1,788 pounds for March, 6 pounds below March 2008.

**The number of milk cows** on farms in the 23 major States was 8.48 million head, 15,000 head more than March 2008, but 4,000 head less than February 2009.

## January - March Milk Production down 0.6 Percent

Milk production in the U.S. during the January - March quarter totaled 47.3 billion pounds, down 0.6 percent from the January - March quarter last year. The average number of milk cows in the U.S. during the quarter was 9.30 million head, 11,000 head more than the same period last year.

## Monthly Milk Production 23 States



**Milk Cows and Production: By Quarter, United States, 2008-2009**<sup>1</sup>

Quarter	Milk Cows <sup>2</sup>		Milk Per Cow <sup>3</sup>		Milk Production <sup>3</sup>		
	2008	2009	2008	2009	2008	2009	Change From 2008
	<i>1,000 Head</i>	<i>1,000 Head</i>	<i>Pounds</i>	<i>Pounds</i>	<i>Million Pounds</i>	<i>Million Pounds</i>	<i>Percent</i>
Jan-Mar	9,286	9,297	5,127	5,088	47,610	47,304	-0.6
Apr-Jun	9,315		5,236		48,774		
Jul-Sep	9,330		5,025		46,881		
Oct-Dec	9,330		5,008		46,727		
Annual	9,315		20,396		189,992		

<sup>1</sup> May not add due to rounding.

<sup>2</sup> Includes dry cows, excludes heifers not yet fresh.

<sup>3</sup> Excludes milk sucked by calves.

**Milk Cows and Production: By Month, 23 Selected States, 2008-2009**<sup>1</sup>

Month	Milk Cows <sup>2</sup>		Milk Per Cow <sup>3</sup>		Milk Production <sup>3</sup>		
	2008	2009	2008	2009	2008	2009	Change from 2008
	<i>1,000 Head</i>	<i>1,000 Head</i>	<i>Pounds</i>	<i>Pounds</i>	<i>Million Pounds</i>	<i>Million Pounds</i>	<i>Percent</i>
Jan	8,445	8,504	1,747	1,753	14,750	14,907	1.1
Feb	8,457	8,486	1,656	1,606	14,007	13,627	-2.7
Mar	8,467	8,482	1,794	1,788	15,191	15,164	-0.2
Apr	8,482		1,757		14,901		
May	8,496		1,819		15,451		
Jun	8,500		1,736		14,760		
Jul	8,515		1,744		14,848		
Aug	8,515		1,718		14,626		
Sep	8,510		1,650		14,041		
Oct	8,512		1,700		14,469		
Nov	8,519		1,654		14,089		
Dec	8,519		1,729		14,728		
Annual	8,495		20,704		175,861		

<sup>1</sup> 2009 previous month revised.

<sup>2</sup> Includes dry cows, excludes heifers not yet fresh.

<sup>3</sup> Excludes milk sucked by calves.

**Estimated Milk Cows and Production: By Month, United States, 2008-2009**<sup>1</sup>

Month	Milk Cows <sup>2</sup>		Milk Per Cow <sup>3</sup>		Milk Production <sup>3</sup>		
	2008	2009	2008	2009	2008	2009	Change From 2008
	<i>1,000 Head</i>	<i>1,000 Head</i>	<i>Pounds</i>	<i>Pounds</i>	<i>Million Pounds</i>	<i>Million Pounds</i>	<i>Percent</i>
Jan	9,276	9,314	1,722	1,732	15,976	16,135	1.0
Feb	9,287	9,291	1,634	1,588	15,176	14,753	-2.8
Mar	9,295	9,287	1,771	1,768	16,458	16,416	-0.3
Apr	9,307		1,733		16,125		
May	9,318		1,793		16,707		
Jun	9,321		1,710		15,942		
Jul	9,335		1,713		15,995		
Aug	9,331		1,689		15,757		
Sep	9,323		1,623		15,129		
Oct	9,324		1,675		15,615		
Nov	9,333		1,630		15,212		
Dec	9,334		1,703		15,900		
Annual	9,315		20,396		189,992		

<sup>1</sup> 2009 revised.

<sup>2</sup> Includes dry cows, excludes heifers not yet fresh.

<sup>3</sup> Excludes milk sucked by calves.

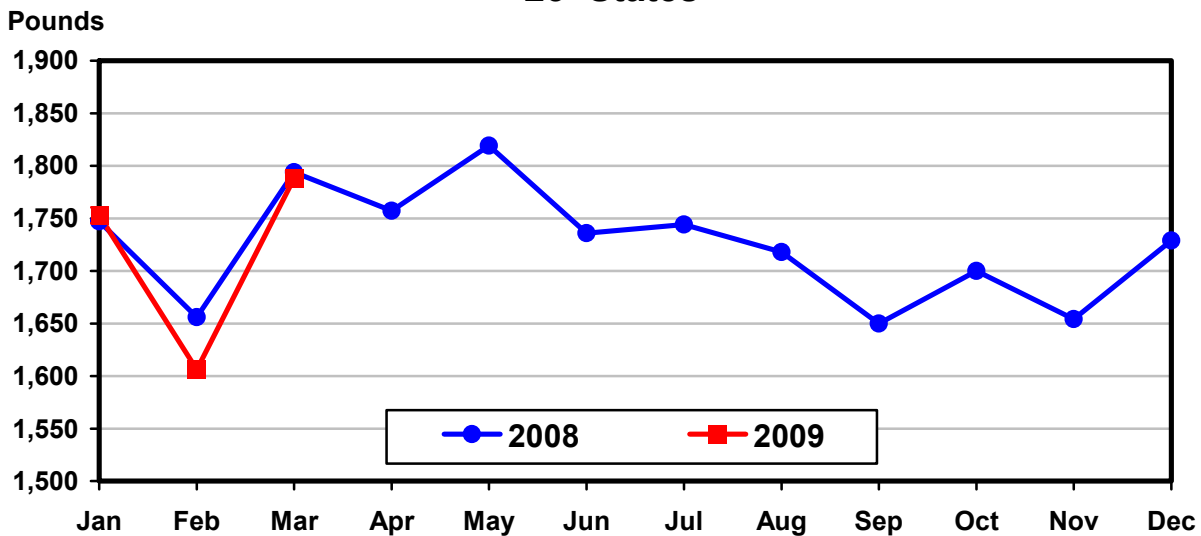
**Milk Cows and Production: By State, March 2008-2009**

State	Milk Cows <sup>1</sup>		Milk Per Cow <sup>2</sup>		Milk Production <sup>2</sup>		
	2008	2009	2008	2009	2008	2009	Change From 2008
	<i>1,000 Head</i>	<i>1,000 Head</i>	<i>Pounds</i>	<i>Pounds</i>	<i>Million Pounds</i>	<i>Million Pounds</i>	<i>Percent</i>
AZ	186	190	2,190	2,090	407	397	-2.5
CA	1,842	1,822	1,975	1,920	3,638	3,498	-3.8
CO	126	128	1,945	1,980	245	253	3.3
FL	120	116	1,655	1,680	199	195	-2.0
ID	540	549	1,885	1,810	1,018	994	-2.4
IL	102	102	1,640	1,675	167	171	2.4
IN	166	167	1,700	1,750	282	292	3.5
IA	216	215	1,730	1,730	374	372	-0.5
KS	115	122	1,790	1,820	206	222	7.8
MI	345	354	1,870	1,890	645	669	3.7
MN	463	468	1,630	1,645	755	770	2.0
MO	110	108	1,300	1,320	143	143	
NM	340	333	1,990	2,110	677	703	3.8
NY	626	623	1,690	1,670	1,058	1,040	-1.7
OH	280	277	1,560	1,590	437	440	0.7
OR	114	114	1,700	1,695	194	193	-0.5
PA	549	550	1,680	1,670	922	919	-0.3
TX	408	430	1,800	1,850	734	796	8.4
UT	85	85	1,720	1,720	146	146	
VT	140	137	1,590	1,555	223	213	-4.5
VA	98	97	1,590	1,590	156	154	-1.3
WA	245	239	1,990	1,960	488	468	-4.1
WI	1,251	1,256	1,660	1,685	2,077	2,116	1.9
23-State Total	8,467	8,482	1,794	1,788	15,191	15,164	-0.2

<sup>1</sup> Includes dry cows, excludes heifers not yet fresh.

<sup>2</sup> Excludes milk sucked by calves.

**Monthly Milk per Cow  
23 States**



**Milk Cows and Production: By State, February 2008-2009 <sup>1</sup>**

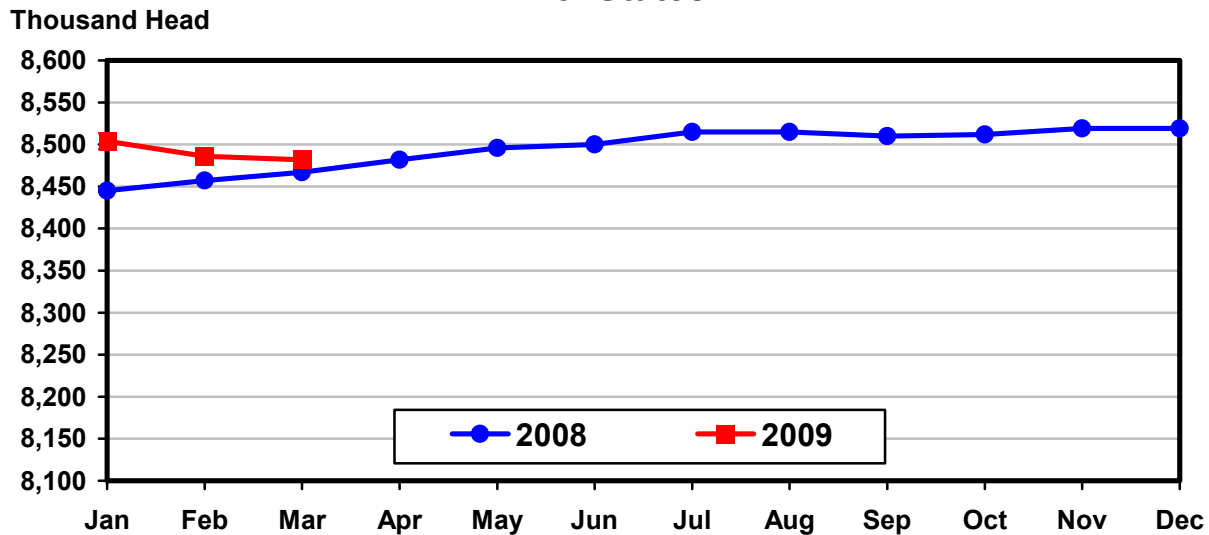
State	Milk Cows <sup>2</sup>		Milk per Cow <sup>3</sup>		Milk Production <sup>3</sup>		
	2008	2009	2008	2009	2008	2009	Change From 2008
	<i>1,000 Head</i>	<i>1,000 Head</i>	<i>Pounds</i>	<i>Pounds</i>	<i>Million Pounds</i>	<i>Million Pounds</i>	<i>Percent</i>
AZ	185	189	1,960	1,870	363	353	-2.8
CA	1,840	1,825	1,810	1,720	3,330	3,139	-5.7
CO	126	128	1,800	1,780	227	228	0.4
FL	120	117	1,530	1,540	184	180	-2.2
ID	537	549	1,750	1,640	940	900	-4.3
IL	102	102	1,515	1,510	155	154	-0.6
IN	167	167	1,600	1,560	267	261	-2.2
IA	216	215	1,600	1,550	346	333	-3.8
KS	115	124	1,645	1,655	189	205	8.5
MI	344	354	1,760	1,695	605	600	-0.8
MN	463	468	1,520	1,475	704	690	-2.0
MO	110	107	1,170	1,150	129	123	-4.7
NM	340	333	1,785	1,880	607	626	3.1
NY	626	623	1,590	1,540	995	959	-3.6
OH	280	277	1,445	1,445	405	400	-1.2
OR	114	114	1,580	1,520	180	173	-3.9
PA	551	551	1,540	1,490	849	821	-3.3
TX	404	430	1,635	1,650	661	710	7.4
UT	85	85	1,590	1,570	135	133	-1.5
VT	140	136	1,500	1,415	210	192	-8.6
VA	98	97	1,470	1,425	144	138	-4.2
WA	244	240	1,850	1,750	451	420	-6.9
WI	1,250	1,255	1,545	1,505	1,931	1,889	-2.2
23-State Total	8,457	8,486	1,656	1,606	14,007	13,627	-2.7

<sup>1</sup> 2009 revised.

<sup>2</sup> Includes dry cows, excludes heifers not yet fresh.

<sup>3</sup> Excludes milk sucked by calves.

**Monthly Milk Cows  
23 States**



**Milk Cows and Production: By State and United States,  
Revised October-December, 2007-2008**

State	Oct-Dec Milk Cows <sup>1</sup>		Oct-Dec Milk Production <sup>2</sup>		Change From 2007
	2007	2008	2007	2008	
	<i>1,000 Head</i>	<i>1,000 Head</i>	<i>Million Pounds</i>	<i>Million Pounds</i>	<i>Percent</i>
AL	13.0	12.0	45	42	-6.7
AK	0.6	0.6	1.8	1.6	-11.1
AZ	185	188	1,035	1,063	2.7
AR	17.0	14.0	50	43	-14.0
CA	1,830	1,843	10,186	10,139	-0.5
CO	123	130	699	738	5.6
CT	19.0	19.0	88	88	
DE	6.5	6.5	27.0	26.0	-3.7
FL	120	119	458	482	5.2
GA	77	75	318	325	2.2
HI	2.5	1.6	6.3	4.8	-23.8
ID	526	554	2,922	3,025	3.5
IL	103	102	467	463	-0.9
IN	166	167	837	810	-3.2
IA	215	215	1,050	1,076	2.5
KS	113	121	561	624	11.2
KY	88	87	297	291	-2.0
LA	27	25	76	68	-10.5
ME	33	33	147	148	0.7
MD	57	56	255	249	-2.4
MA	14.5	14.5	62	61	-1.6
MI	343	353	1,912	1,934	1.2
MN	463	467	2,135	2,187	2.4
MS	21	19	72	63	-12.5
MO	109	110	393	397	1.0
MT	17.0	16.0	80	77	-3.8
NE	57	59	261	278	6.5
NV	27	27	141	147	4.3
NH	15.0	15.0	72	72	
NJ	10.0	10.0	41	38	-7.3
NM	331	334	1,840	1,938	5.3
NY	626	625	3,020	3,024	0.1
NC	48	46	221	213	-3.6
ND	27	25	106	100	-5.7
OH	275	277	1,222	1,241	1.6
OK	67	63	271	261	-3.7
OR	115	115	521	548	5.2
PA	550	548	2,647	2,555	-3.5
RI	1.1	1.1	4.5	4.9	8.9
SC	18.0	17.0	75	71	-5.3
SD	86	93	413	466	12.8
TN	61	59	233	225	-3.4
TX	397	429	1,877	2,121	13.0
UT	85	85	435	443	1.8
VT	140	139	632	621	-1.7
VA	100	97	429	421	-1.9
WA	243	245	1,387	1,385	-0.1
WV	12.0	12.0	45	44	-2.2
WI	1,249	1,254	5,934	6,051	2.0
WY	7.0	7.0	34.7	33.5	-3.5
US <sup>3</sup>	9,236	9,330	46,042	46,727	1.5

<sup>1</sup> Includes dry cows, excludes heifers not yet fresh.

<sup>2</sup> Excludes milk sucked by calves.

<sup>3</sup> May not add due to rounding.

**Milk Cows and Production: By State and United States,  
Preliminary January-March, 2008-2009**

State	Jan-Mar Milk Cows <sup>1</sup>		Jan-Mar Milk Production <sup>2</sup>		Change From 2008
	2008	2009	2008	2009	
	<i>1,000 Head</i>	<i>1,000 Head</i>	<i>Million Pounds</i>	<i>Million Pounds</i>	<i>Percent</i>
AL	12.0	12.0	53	52	-1.9
AK	0.6	0.6	2.1	1.5	-28.6
AZ	185	189	1,144	1,124	-1.7
AR	16.5	13.5	54	45	-16.7
CA	1,840	1,826	10,460	10,087	-3.6
CO	126	128	709	731	3.1
CT	19.0	19.0	93	91	-2.2
DE	6.5	6.5	30.0	28.0	-6.7
FL	120	117	569	571	0.4
GA	77	76	361	376	4.2
HI	2.0	1.5	4.7	5.3	12.8
ID	537	551	2,957	2,897	-2.0
IL	102	102	488	489	0.2
IN	167	167	835	836	0.1
IA	216	215	1,083	1,071	-1.1
KS	115	124	593	652	9.9
KY	91	86	323	313	-3.1
LA	27	24	95	84	-11.6
ME	33	33	147	146	-0.7
MD	57	56	271	260	-4.1
MA	15.0	14.0	64	59	-7.8
MI	344	354	1,907	1,933	1.4
MN	463	468	2,204	2,221	0.8
MS	21	19	86	74	-14.0
MO	110	108	407	403	-1.0
MT	17.0	15.0	76	75	-1.3
NE	57	60	265	284	7.2
NV	27	27	138	146	5.8
NH	15.0	15.0	76	73	-3.9
NJ	10.0	10.0	44	43	-2.3
NM	339	333	1,922	2,002	4.2
NY	626	623	3,092	3,041	-1.6
NC	48	46	239	230	-3.8
ND	26	25	107	98	-8.4
OH	279	277	1,270	1,272	0.2
OK	66	62	277	265	-4.3
OR	114	114	566	556	-1.8
PA	551	550	2,671	2,637	-1.3
RI	1.1	1.1	4.8	4.8	
SC	18.0	17.0	90	84	-6.7
SD	87	94	426	460	8.0
TN	61	58	256	244	-4.7
TX	405	430	2,072	2,271	9.6
UT	85	85	425	425	
VT	140	137	655	616	-6.0
VA	98	97	451	442	-2.0
WA	244	240	1,416	1,352	-4.5
WV	12.0	11.0	46	41	-10.9
WI	1,250	1,255	6,052	6,069	0.3
WY	7.0	5.0	33.6	23.3	-30.7
US <sup>3</sup>	9,286	9,297	47,610	47,304	-0.6

<sup>1</sup> Includes dry cows, excludes heifers not yet fresh.

<sup>2</sup> Excludes milk sucked by calves.

<sup>3</sup> May not add due to rounding.

## Reliability Statement

**Survey Procedures:** Primary data used to determine these estimates were obtained from a sample of producers. Individual States maintain a list of all known milk producers and information on the size of their herd. States use all known sources of producers to ensure that their lists are as complete as possible. Generally, all large producers and a sample of small producers are included in the survey. Questionnaires are mailed to producers near the end of the month to obtain data for the first day of the month. Additional reports are obtained by telephone, as needed, to supplement the mail response. Where feasible, States utilize state and federal administrative data, rather than conduct a monthly or quarterly survey, to estimate milk production. This eliminates duplication of data gathering by different government agencies. Indications of milk cow inventory are also obtained in the January and July Cattle Surveys.

**Estimation Procedures:** State offices prepare these estimates by using a combination of survey indications, historic trends, and any available administrative data. Individual State estimates are reviewed by the Agricultural Statistics Board for reasonableness.

**Revision Policy:** Milk production, rate per cow, and number of cows are subject to revision the following month for monthly States or the following quarter for the quarterly States. Normally, Federal Market Order sales are the main basis for revisions. However, data for all orders are not available in time for this revision. Estimates are again subject to revisions in February each year based on additional administrative data. In the event that additional changes are necessary, a third revision is possible in February the following year. Estimates are again reviewed after data from the five-year Census of Agriculture are available. No revisions are made after that date.

**Reliability:** Since all operations with dairy animals are not included in the sample, survey estimates are subject to sampling variability. Survey results are also subject to non-sampling errors such as omissions, duplications, and mistakes in reporting, recording, and processing the data. The effects of these errors cannot be measured directly. They are minimized through rigid quality controls in the data collection process and through a careful review of all reported data for consistency and reasonableness.

To assist users in evaluating the reliability of the estimates in this report, the "Root Mean Square Error" is shown for selected items on the next page. The "Root Mean Square Error" is a statistical measure based on past performance and is computed using the differences between first and final estimates. The "Root Mean Square Error" for milk cow inventory estimates over the past 20 quarters is 0.3 percent. This means that chances are 2 out of 3 that the final estimate will not be above or below the current estimate of 9.30 million head by more than 0.3 percent. Chances are 9 out of 10 that the difference will not exceed 0.6 percent.

**Reliability of Quarterly Milk Production Estimates <sup>1</sup>**

Item	Root Mean Square Error	90% Confidence Level		Difference Between First and Latest Estimates			Quarters	
				Average	Smallest	Largest	First Above Latest	First Below Latest
				Million Pounds	Million Pounds	Million Pounds	Number	Number
Milk Production	<i>Percent</i> 0.2	<i>Percent</i> 0.3	<i>Million Pounds</i> 145	<i>Million Pounds</i> 63	<i>Million Pounds</i> 3	<i>Million Pounds</i> 192	<i>Number</i> 4	<i>Number</i> 16
All Milk Cows	<i>Percent</i> 0.3	<i>Percent</i> 0.6	<i>1,000 Head</i> 52	<i>1,000 Head</i> 25	<i>1,000 Head</i> 1	<i>1,000 Head</i> 53	<i>Number</i> 1	<i>Number</i> 19

<sup>1</sup> Based on the U.S. total for the past 20 quarters.

**Information Contacts**

Listed below are the commodity specialists in the Livestock Branch of the National Agricultural Statistics Service to contact for additional information.

Dan Kerestes, Chief, Livestock Branch ..... (202) 720-3570

**Livestock Section**

Scott Hollis, Head, Livestock Section ..... (202) 690-2424  
 Jim Collom - Dairy Products ..... (202) 690-3236  
 Joe Gaynor - Dairy Products Prices ..... (202) 690-2168  
 Jason Hardegee - Cattle, Cattle on Feed ..... (202) 720-3040  
 Sherry Bertramsen - Livestock Slaughter ..... (515) 284-4340  
 Everett Olbert - Sheep and Goats ..... (202) 720-4751  
 Mike Miller - Milk Production and Milk Cows ..... (202) 720-3278  
 Nick Streff - Hogs and Pigs ..... (202) 720-3106

## ACCESS TO REPORTS!!

---

For your convenience, there are several ways to obtain NASS reports, data products, and services:

### INTERNET ACCESS

All NASS reports are available free of charge. For free access, connect to the Internet and go to the NASS Home Page at: [www.nass.usda.gov](http://www.nass.usda.gov).

### E-MAIL SUBSCRIPTION

All NASS reports are available by subscription free of charge direct to your e-mail address. Starting with the NASS Home Page at [www.nass.usda.gov](http://www.nass.usda.gov), under the right navigation, *Receive reports by Email*, click on **National** or **State**. Follow the instructions on the screen.

-----

### PRINTED REPORTS OR DATA PRODUCTS

**CALL OUR TOLL-FREE ORDER DESK: 800-999-6779 (U.S. and Canada)**  
**Other areas, please call 703-605-6220      FAX: 703-605-6900**  
**(Visa, MasterCard, check, or money order acceptable for payment.)**

-----

### ASSISTANCE

For **assistance** with general agricultural statistics or further information about NASS or its products or services, contact the **Agricultural Statistics Hotline** at **800-727-9540**, 7:30 a.m. to 4:00 p.m. ET, or e-mail: [nass@nass.usda.gov](mailto:nass@nass.usda.gov).

The U.S. Department of Agriculture (USDA) prohibits discrimination in all its programs and activities on the basis of race, color, national origin, age, disability, and where applicable, sex, marital status, familial status, parental status, religion, sexual orientation, genetic information, political beliefs, reprisal, or because all or a part of an individual's income is derived from any public assistance program. (Not all prohibited bases apply to all programs.) Persons with disabilities who require alternative means for communication of program information (Braille, large print, audiotape, etc.) should contact USDA's TARGET Center at (202) 720-2600 (voice and TDD).

To file a complaint of discrimination, write to USDA, Director, Office of Civil Rights, 1400 Independence Avenue, S.W., Washington, D.C. 20250-9410, or call (800) 795-3272 (voice) or (202) 720-6382 (TDD). USDA is an equal opportunity provider and employer.